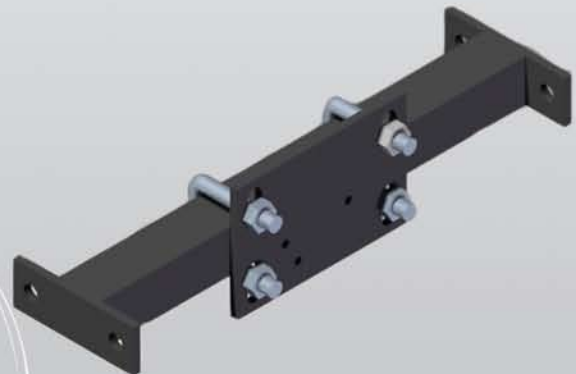
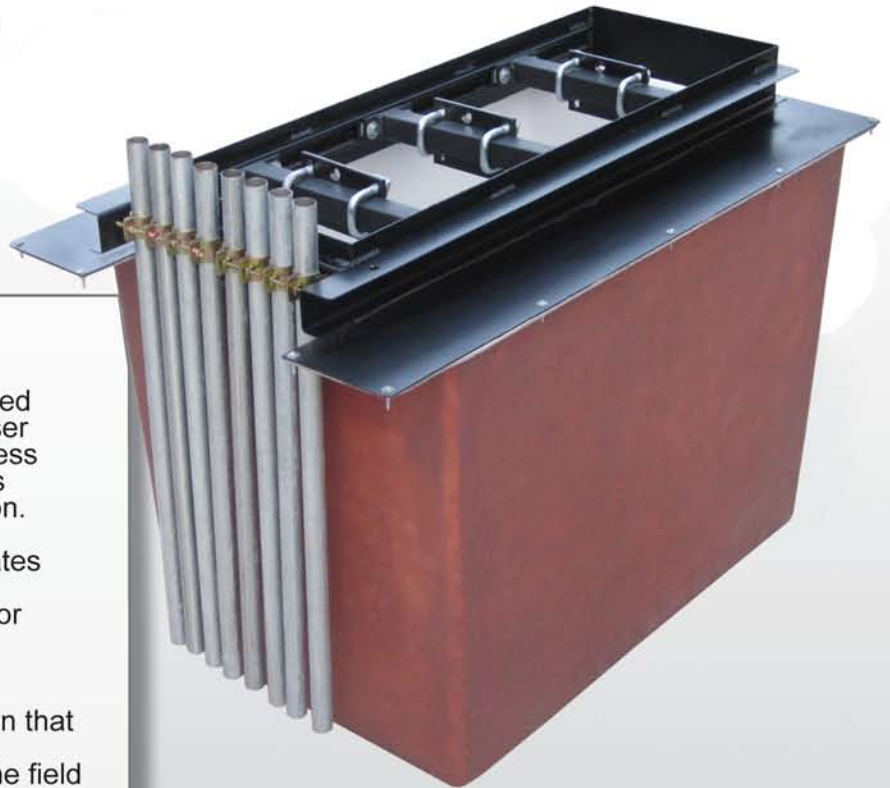


## CONDUITLESS ENTRY DISPENSER SUMPS

Petroleum Containment's Conduitless Entry Dispenser Sumps eliminate unnecessary sump penetrations by allowing electrical conduit to enter the dispenser without entering the sump. Conduitless Entry Dispenser Sumps are designed similar to the popular MVR Dispenser Sump for the most effective leak protection.

### Features:

- **Conduitless Entry** – Conduit is allowed to enter into the bottom of the dispenser without penetrating the sump walls. Less entries require less penetration fittings and provide less risk for water intrusion.
- **Single Piece Construction** – Eliminates the troublesome seams that two part sumps have, resulting in less places for water to penetrate.
- **UL Listed Isophthalic Fiberglass Materials** - Provide a rigid construction that prevents deforming due to backfill. Fiberglass can be easily repaired in the field by qualified technicians if drilled incorrectly or damaged by construction equipment.
- **Smooth White Interior** – Makes the working area brighter and reduces cuts and scratches while working inside the sump.
- **Heavy Gauge Steel Frames** – Provide strength and rigidity. Designed to lock into the concrete foundation.
- **Individual Stabilizer Bars with 3-Axis Adjustment** – Accommodates multi-product dispensers without displacing the product lines. Ensures proper load transfer in the case of an impact from any direction.
- **Optional Rainlip** – Protrudes into the bottom of the dispenser to prevent surface water from rain and washdowns from entering the sump.



Patent No: 4,921,115