

## 12PLS-1G (FIBERGLASS BONDING KIT) TWIST-LOK RETROFIT INSTALLATION INSTRUCTIONS



### IMPORTANT

Please read all warnings and follow the installation instructions completely and carefully. Failure to do so may cause product failure, or result in environmental contamination due to liquid leakage into the soil, creating hazardous spill conditions.



### WARNING - DANGER

Using electrically-operated equipment near gasoline or gasoline vapors may result in fire or explosion, causing personal injury and property damage. Be sure that the working area is free from such hazards and always use proper precautions.

### 1 Measure the Distance From Top

Measure the distance from top of the existing sump riser to the bottom of the manhole cover. If necessary, cut existing riser so that it is at least 10" below the bottom of the manhole cover. Make cut as straight as possible and straighten/level any gaps larger than 1/8".

### 2 Scuff Top Edge

Using 80 grit sandpaper, thoroughly scuff the top edge of the existing riser, including the inside and outside surface a minimum 1/2" down. It is also necessary to sand the bottom surface of the retrofit kit adaptor plate where it will attach to the existing riser. Wipe all surfaces clean with Acetone.

### 3 Lower Plate and Adapter Plate

Lower the thread and the adapter plate onto the existing sump. Make sure that it is centered with the existing riser. Trace the inside of the existing riser onto the bottom of the retrofit adapter plate. Remove retrofit kit and trim adapter plate to the line. Place retrofit kit back onto the existing sump.

### 4 Apply Fiberglass Kit

Apply fiberglass kit according to the labeled instructions. Use 3 layers and stagger overlaps. Use fiberglass roller to be certain all trapped air is removed.

### 5 Sand and Wipe With Acetone

Once laminate is fully cured, sand area and wipe with acetone. Next, mix the gelcoat per the attached instructions, and apply gelcoat to all areas that were bonded with fiberglass matting. The gelcoat will seal any possible pinholes in the laminate fiberglass and provide an additional anti-wicking, corrosive barrier.

### 6 Lower Lid

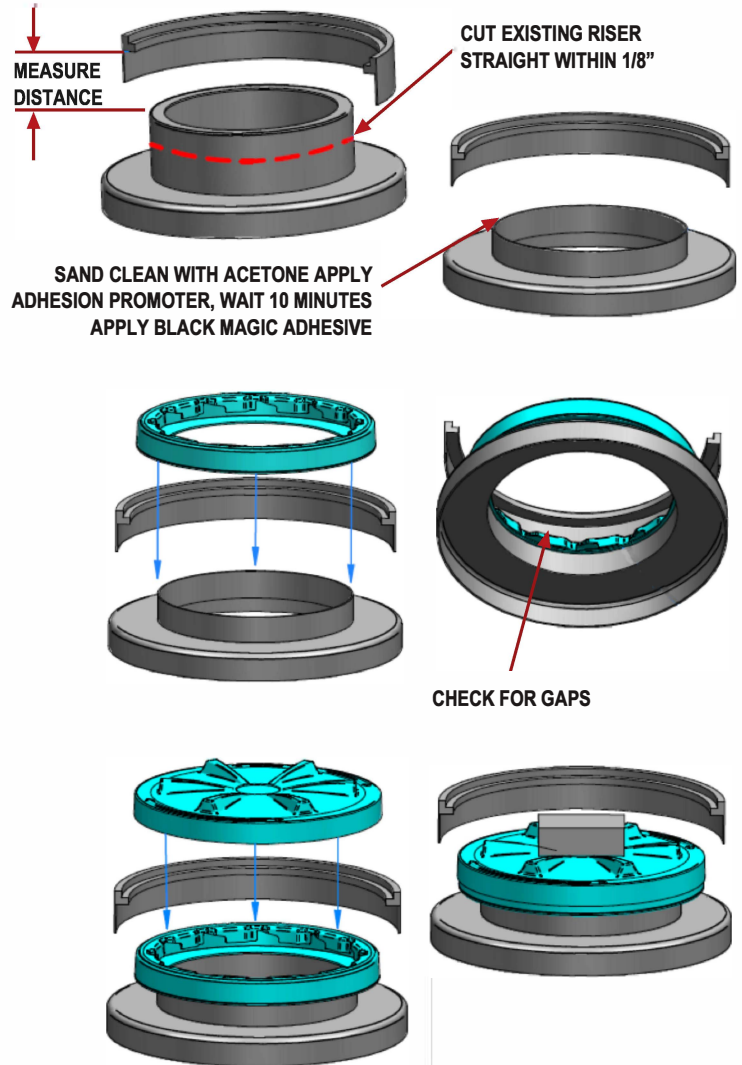
Carefully lower the lid onto the thread. DO NOT TURN!

### 7 Clean Sealing Surface

Clean sealing surface of sump access opening and lubricate the gasket of the Twist-Lok Access cover and mating surface to ensure a positive liquid tight seal. Recommend monthly or each time the Twist-Lok Access Cover is separated from its mating surface.

#### ACCESS COVER GASKET

Clean sealing surface of sump access opening and lubricate the gasket of the Twist-Lok Access cover and mating surface to ensure a positive liquid tight seal. Recommend monthly or each time the Twist-Lok Access Cover is separated from its mating surface.



### Maintenance

All dispenser sumps should be checked regularly for the presence of water or fuel products. Any liquid present in the sump should be promptly removed and disposed of properly. I

f liquid is found in the sump, prompt action should be taken to repair the leak and re-test the equipment for integrity.