



RSS Series Dispenser Sump

The new RSS Series dispenser sump is designed for fast, reliable installations—saving time in the field, reducing shipping costs, minimizing storage space, and built entirely from 100% fiberglass for lasting strength.

ENGINEERED FOR QUALITY

The closed-molded design provides a consistent wall thickness with a smooth finish on the inside and outside.

ENGINEERED FOR LOGISTICS

Nestable design and integrated features reduce shipping costs and warehouse space.

ENGINEERED TO LAST

Manufactured with the most corrosion resistant composites available ensuring secondary containment dependability for the life of the station.

100% FIBERGLASS

100% high quality, non-corrosive fiberglass provides long-term reliable containment from fuel exposure without warping, cracking or becoming brittle.

DUAL CONDUITLESS ENTRY

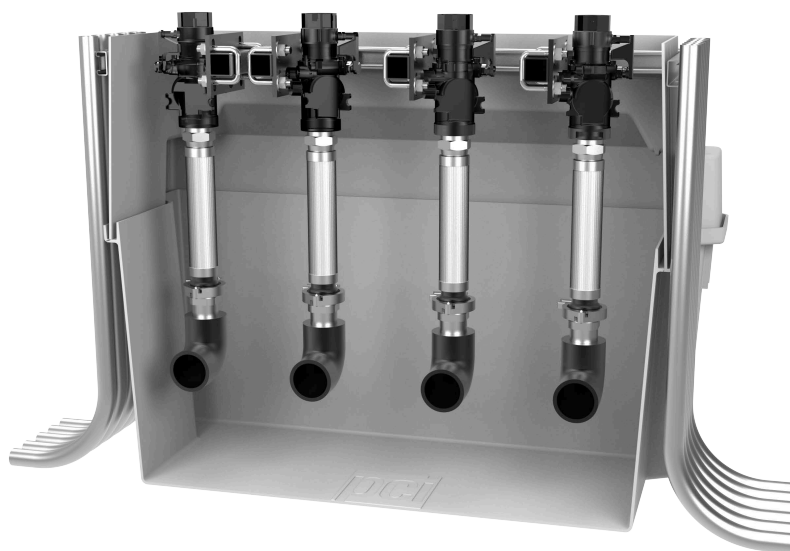
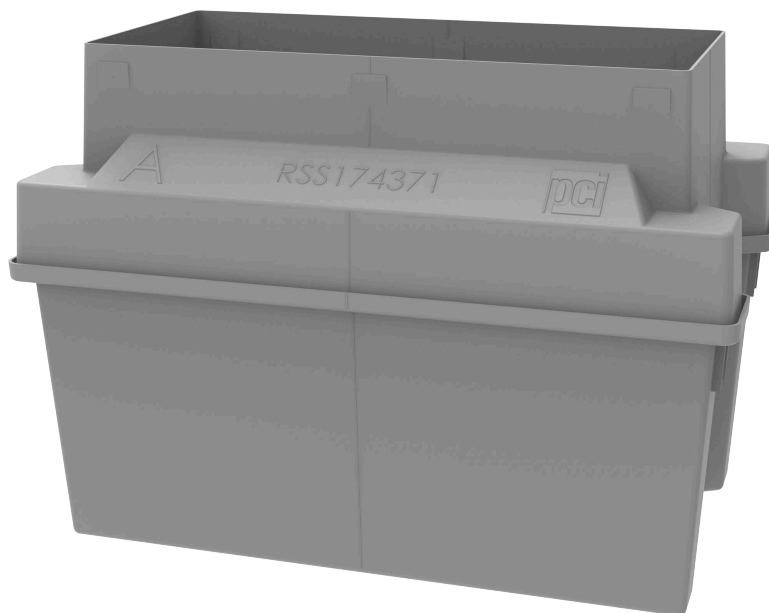
Designed to seamlessly accommodate either conduitless entry configuration without additional adapters.

HEIGHT-ADJUSTABLE RISER

Trim on-site for a perfect fit to any dispenser height, ensuring a clean, precise installation.

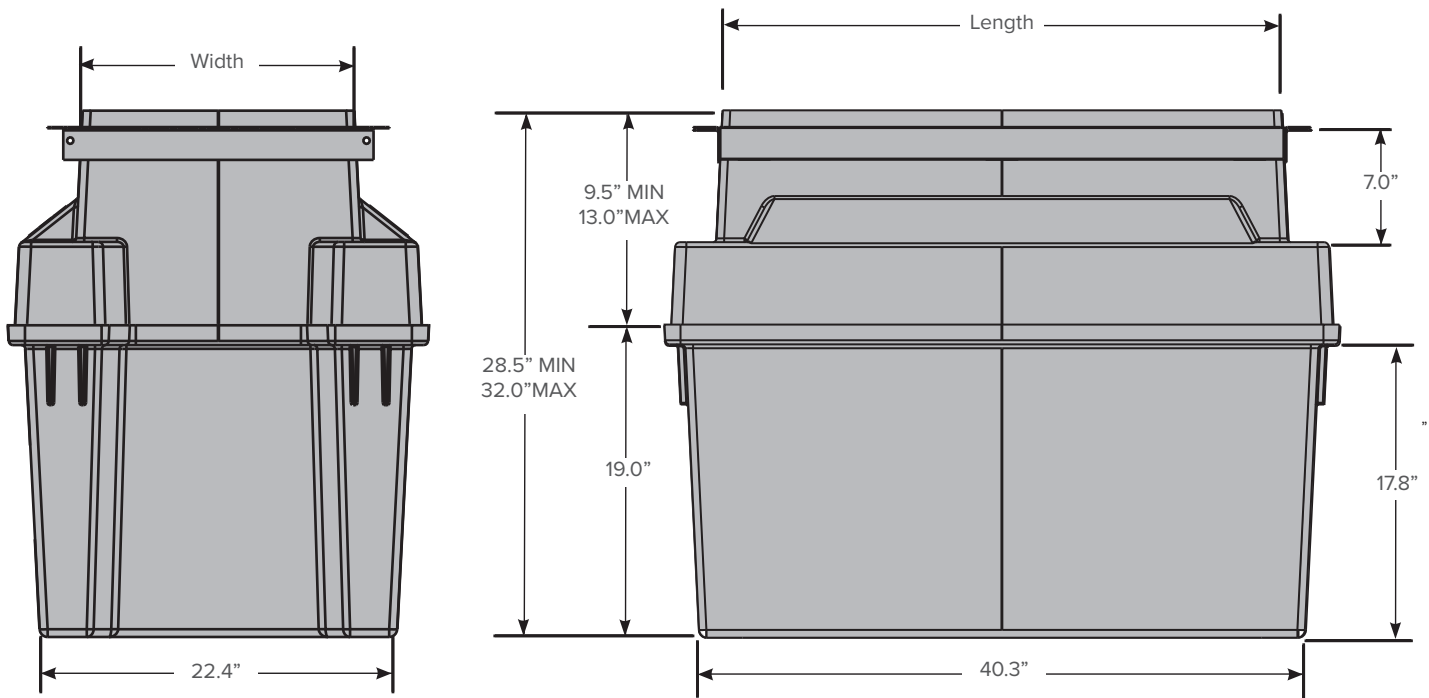
PRE-PLUMBED OPTIONS AVAILABLE

RSS series sumps can be configured with or without factory pre-plumbed service. Installers can choose from fully pre-plumbed, partially pre-plumbed, or non-plumbed options to match the requirements of the jobsite.



DISPENSER MODEL	SINGLE WALL	WIDTH	LENGTH	STABILIZER KIT
Wayne Ovation 3+1+1	RSS146371A	14.75"	37.1875"	SVU-L
Wayne Ovation	RSS146371S	14.75"	37.1875"	SVU-L
Wayne Helix	RSS174371A	17"	37.1875"	SVU-L
Gilbarco Encore	RSS174371S	17"	37.1875"	SVU-L

PART NUMBER LEGEND			
Series RSS: Standard		Length 371: 37.1875"	
RSS	146	371	A
Width 146: 14.75" 174: 17"		Suffix (PCI Internal Identifier) A: Angle S: Unistrut	



DRI-SUMP
COMPATIBLE

